

Alaska Department of Fish and Game

Habitat Section
Southeast Region



107-30-10760 Tributary 1

ADDITION

Water body name:

Survey date: 8/25/2025

Quad: Petersburg A-2

Species & Lifestage:

Upper Reach Latitude: 56.178768 **Longitude:** -132.476903

Survey crew: TE, NJ, DK

Lower Reach Latitude: 56.178353 **Longitude:** -132.490140

Findings: We surveyed this uncataloged stream from the road using baited minnow traps and GPS and captured juvenile coho salmon, Dolly Varden, and cutthroat trout. The stream is characterized by mostly stagnant water due to beaver dams in the area. The stream crosses the road via a 3 ft corrugated metal culvert that is fully backwatered. Immediately upstream of the pipe is a 3.5 ft beaver dam that appears to be blocking fish passage; only resident fish caught above this dam (Table 1; Figures 1–3). We used the US Forest Service stream layer to depict the channel downstream.

Recommendations: Add this uncataloged stream to the anadromous waters catalog up to waypoint 1038 for rearing coho salmon (Figure 4).

Nomination: Pending

Table 1.–107-30-10760 Tributary 1 survey data.

Waypoint	Latitude	Longitude	Notes	Stream Width ft	Stream Substrate	Habitat Features	Gradient %	Sample Effort	Sample Results
1001	56.178727	-132.476982	Approximately 36 inch corrugated metal pipe. No fish blockage seen, pipe is back watered. Setting minnow trap upstream. Very low gradient 0-1%. If fish caught, may be worth exploring further upstream to find upper extent as low gradient here to continue.	8-10	Small Gravel		1-2	MT	3 CO 2 DV
1038	56.178823	-132.476833	Beaver ponds just above road and pipe. 3.5 ft dam, setting MT above to see if fish can make it. Has flow from dam to downstream.	8-10	Fine Organic	Beaver Pond	0-1	MT	4 CT



Figure 1.—Juvenile coho salmon caught at waypoint 1001.



Figure 2.—Backwatered inlet of culvert at waypoint 1001.



Figure 3.—Beaver dam at waypoint 1038.

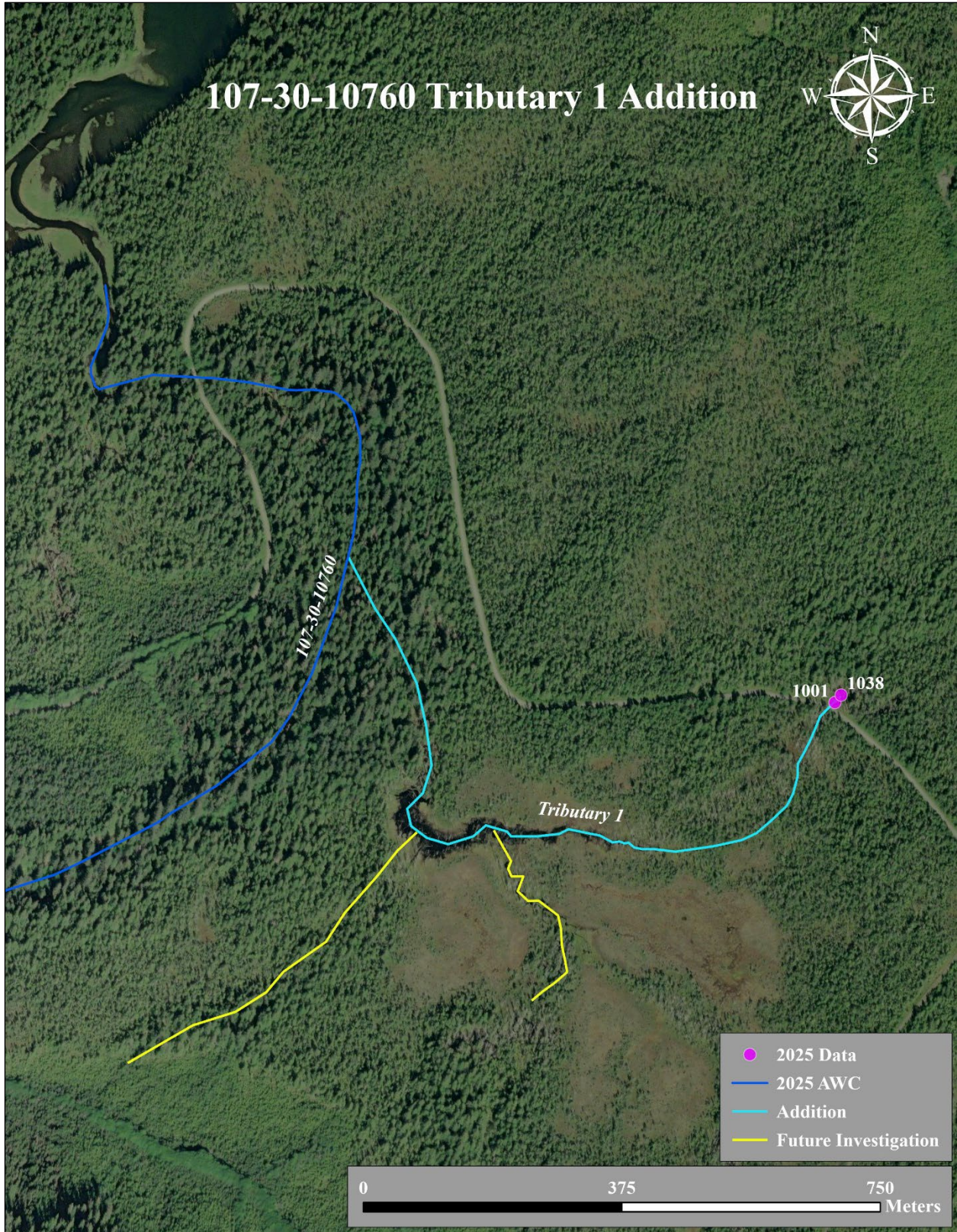


Figure 4.—107-30-10760 Tributary 1 Addition map.